



SUMMARY OF TOITŪ CARBONREDUCE CERTIFICATION

FARMLANDS CO-OPERATIVE SOCIETY LIMITED

Year 1 of 3 year certificate period



Farmlands Co-operative Society Limited meets the requirements of Toitū carbonreduce certification having measured its greenhouse gas emissions in accordance with ISO 14064-1:2006 and committed to managing and reducing its emissions in respect of the operational activities of its organisation.

Farmlands Co-operative Society Limited is a member owned Industrial and Provident Society whose primary focus is to supply the Agricultural primary Sector. Farmlands employs in excess of 1,400 people and operates a network of Rural Supplies stores across New Zealand. Farmlands also operates as a Payment Card provider, a distributor of Fuels, and manufactures Animal Nutrition products. Farmlands has annual revenue in excess of \$1.1b. This inventory reports into the Toitū carbonreduce programme.

Farmlands recognises that its operations may have an impact on the environment and is incorporating sustainability as a key pillar of its organisational strategy.

This process is the beginning for Farmlands to measure and understand the footprint and potential impact of current business activities. Once understood, Farmlands will work towards establishing a programme to manage the environmental impact from its business activities.

EMISSIONS SUMMARY¹

Farmlands Co-operative Society Limited's emissions for this year (01 July 2018 to 30 June 2019) were 17,223.92 tCO₂e. The operational GHG emission sources included in this inventory are shown in Figure 1 below.

¹ **Disclaimer:** This Disclosure Statement is a summary of the verified information considered for certification and the certification decision. It should not be taken to represent the full submission for certification. Whilst every effort has been made to ensure that the information in this Disclosure Statement is accurate and complete, Enviro-Mark Solutions Limited (trading as Toitū Envirocare) does not, to the maximum extent permitted by law, give any warranty or guarantee relating to the accuracy or reliability of the information.

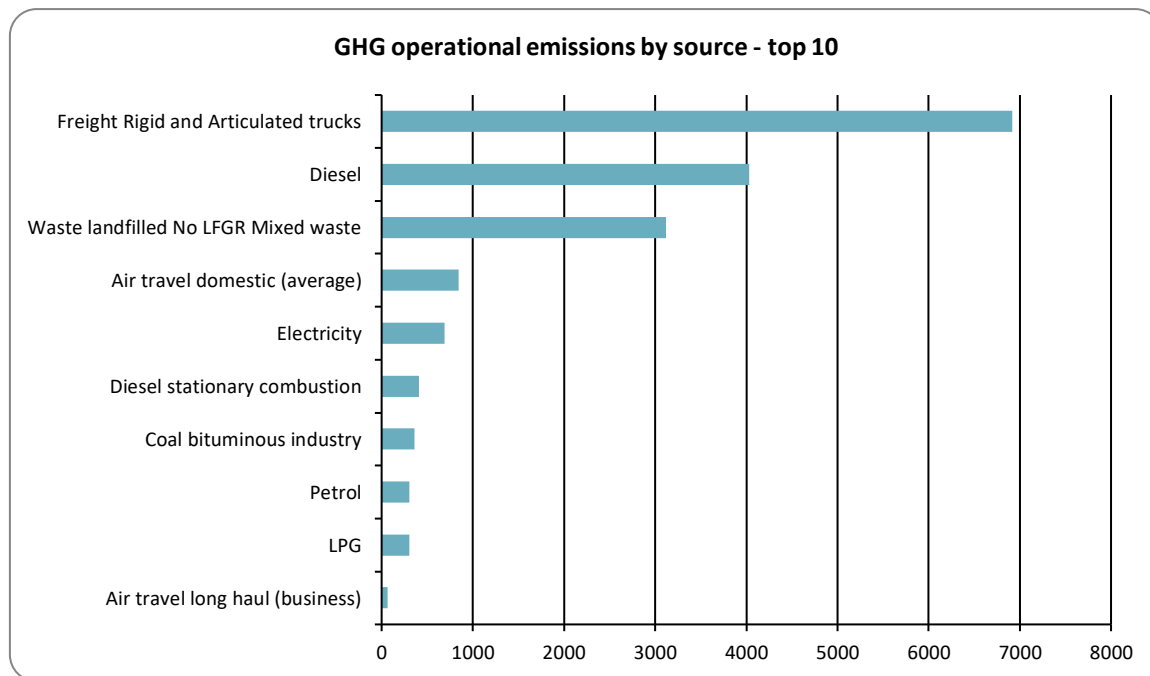


Figure 1: GHG emissions by emissions source

Emissions as tonnes of carbon dioxide equivalents (tCO₂e) for this period were:

Scope	tCO ₂ e
Scope 1	5,488.80
Scope 2	691.96
Scope 3 Mandatory	11,043.16
Scope 3 Additional	0.00
Scope 3 One time	0.00
Total gross emissions	17,223.92

EMISSIONS REDUCTIONS

To reduce its emissions, Farmlands Co-operative Society Limited has developed a GHG emissions management plan and reduction targets. Some of these plans include:

Farmlands is committed to reducing its GHG emissions intensity by 3% annually and the development of short, medium and long term targets. The focus areas for achieving reductions are:

- Emissions from waste & energy reduced by 3% per m² of retail floor space
- Reduce air travel
- Reduce fuel consumption (Diesel and Petrol)
- Waste reduction through improved handling processes & initiatives
- Increased use of renewable energy through expansion of solar power
- Roll out LED lighting systems at 15 sites
- Dry freight reduction (excludes Fuel Delivery)
- PFH/Fuel delivery - reduction in CO₂e intensity

EMISSIONS BOUNDARIES

The attached chart defines the key responsibility areas for Farmlands.

Organisational Boundaries are set on a functional basis that reflect the underlying business activities undertaken. This structure was agreed with Toitū Envirocare.

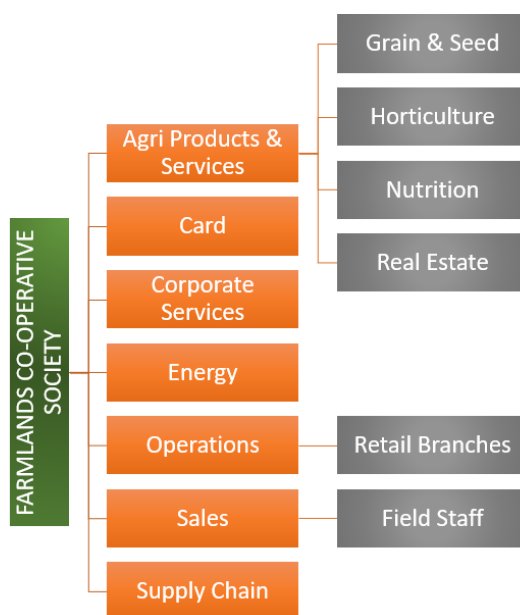


Figure 2: Organisational structure showing business units included and excluded

An operational control consolidation approach was used to account for emissions.

This is with reference to the methodology described in the GHG Protocol and ISO 14064-1:2006 standards.

No emission sources have been excluded from the inventory.

CERTIFICATE DETAILS

Certification status – Toitū carbonreduce certified organisation

Certificate number – 2020090J, Year 1 of 3 year certificate period

Valid until – 31 August 2023

Measurement period – 01 July 2018 to 30 June 2019

Base year – 01 July 2018 to 30 June 2019

Verified by – Enviro-Mark Solutions Limited

Level of assurance – Limited

Data quality score – Fair

535 Wairakei Road, Burnside, Christchurch, 8140, New Zealand,
www.farmlands.co.nz, Mark.McHardy@farmlands.co.nz Telephone: 0800 200 600